

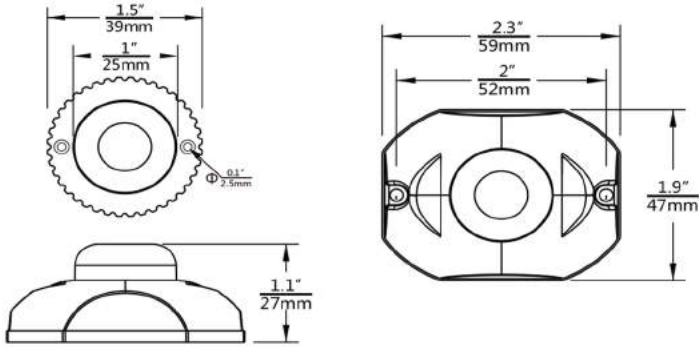


WIRING EXAMPLES & INSTRUCTIONS

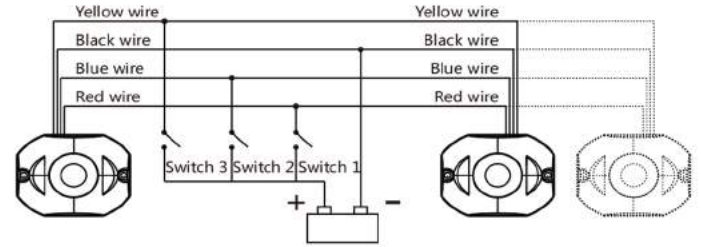
NOTE:

1. Light in master mode "Sync" with light in master mode.
2. Light in master mode "Alternately" with light in slave mode.
3. Light in slave mode "Sync" with light in slave mode.
4. Must change the mode before Yellow wire connection together.
5. Either "Sync" or "Alternately" must be in the same Flash Pattern. Can use Yellow wire to reset the flash, then two or more lights be in same Flash Pattern.
6. In Wiring one, Switch 2 covered with Switch 1.

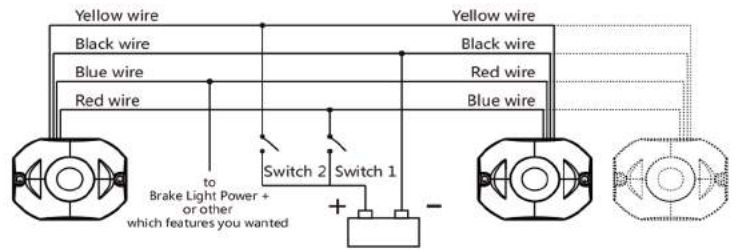
MOUNTING DIAGRAM



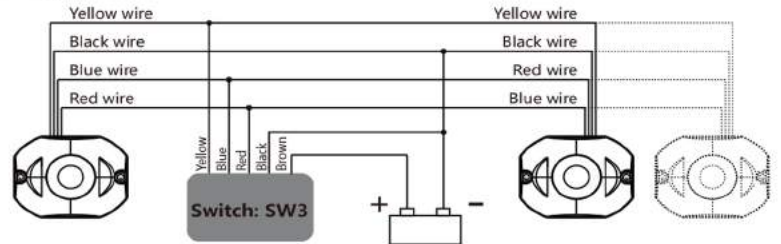
Wiring one:



Wiring two:



Wiring three:



- Red wire = Positive, ON/OFF 1
- Blue wire = Positive, ON/OFF 2
- Yellow wire = Flash pattern Changer / Sync
- Black wire = Negative, Ground

1). Activate the lighthouse

The Red (+) or Blue (+) wire to Positive and the black (-) wire to Negative. Please note that ON/OFF 2 overrides ON/OFF 1.

2). Flash pattern changer

Momentarily connect the Yellow wire to the Positive to cycle through the 35 flash patterns.

3). Set master & slave mode

Connect the Yellow wire to Positive more than 3 second to cycle through master or slave mode. If time more than 6 second, the Flash pattern will be Reset to Flash 1 pattern. Note: master mode color 1 bright. slave mode color 2 bright.

4). Sync or Alternate (two or more lighthouses)

Check each lighthouse in the same flash pattern. Connected the same color wires together. Activate the lighthouse that in same Flash pattern. lighthouses are Synchronization, in same mode lighthouses are alternate in different mode (Master & Master / Slave & Slave in Sync,) (Master & Slave in Alternate)

ALL (color 1+2)	Color 1 alone	Color 2 alone	Split (color 1+2)
1. Random	2. Random 1	3. Random 2	28. Single Fast (Split)
4. Steady On	5. Steady On 1	6. Steady On 2	29. Single Slow (Split)
7. Single (ECE R65)	8. Single 1	9. Single 2	30. Double Fast (Split)
10. Double (ECE R65)	11. Double 1	12. Double 2	31. Double Slow (Split)
13. Triple	14. Triple 1	15. Triple 2	32. Triple (Split)
16. Quad	17. Quad 1	18. Quad 2	33. Quad (Split)
19. EU-Quad	20. EU-Quad 1	21. EU-Quad 2	34. Extreme Action (Split)
22. Extreme Action	23. Extreme Action 1	24. Extreme Action 1	35. Extreme Warp (Split)
25. Extreme Warp	26. Extreme Warp 1	27. Extreme Warp 1	

